

[Tufts University December 2023 Teaching Symposium](#)
[The Impact of Artificial Intelligence on Education at Tufts](#)

Schedule¹

Tuesday December 12th 2023

Breakfast & Coffee (JCC 280) Student poster viewing	9:00 am
Welcome & Keynote Address (JCC 270) Cidgem Talgar, Vice Provost for Education Cynthia J. Alby, Georgia College	9:30 am
Break (JCC 280) Student poster viewing	11:00 am
Video: Tufts Student Perspectives on AI	11:15 am
Faculty Panel moderated by Freedom Baird & Justin Horvath, ETS Meera Gatlin, DVM, MPH, DACVPM, Public Health and Community Medicine Rebecca Shakespeare, PhD, Urban & Environmental Policy & Planning Erica Kemmerling, PhD, Mechanical Engineering	11:20 am
Lunch (JCC 280) Student poster viewing	12:20 pm
Interactive Sessions	1-2 pm
Discussion with Dr Cynthia Alby (JCC 280) Join an opportunity to continue the conversation and Q&A from the morning keynote in this open discussion with our Keynote Speaker and colleagues.	
Learning Lab – Play Space with AI (JCC 265) The best way to learn about AI? Play with it! Join Dr Ethan Danahy and ETS/CELT staff to create something yourself! No experience necessary.	

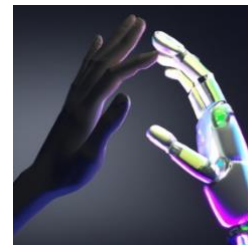
¹ The in-person event will be hosted in the auditorium room 270 Joyce Cummings Center at 177 College Ave, Medford, MA. The online program will run 9:30am-12:30pm and provide zoom access to the Welcome, Keynote Address and Faculty Panel.

<https://provost.tufts.edu/celt/december-symposium/>

[The Impact of Artificial Intelligence on Education at Tufts](#)

Sparking Curiosity: Transforming Teaching & Learning with AI Keynote Address by Cynthia J. Alby, Georgia College

Abstract: Many of us are feeling overwhelmed on multiple fronts. What if we can change the narrative of AI from a burden to a path to re-enchanting teaching and learning for both you and your students? With AI's advanced algorithms and adaptive tools, we can tailor educational experiences to enhance learning outcomes and student engagement like never before. AI offers nearly limitless opportunities for co-exploration, higher order thinking, active learning, and engagement. In this session, I will show you how AI can make it possible to easily incorporate more case studies, examples, games, and simulations (all evidence based strategies for deep learning) tailored to your content and your students. Discover how it can support learning for all students, but especially English language learners and students with special needs. In this presentation, I'll share how I've used AI successfully myself and how others are using it to reinvigorate their courses. Get ready to enjoy AI.



Speaker Bio



Cynthia Alby, Professor of Teacher Education and Faculty Director for High Impact Practices at Georgia College, has spent most of her career immersed in “avid cross-disciplinary idea synthesizing.” She studies pedagogy, sociology, psychology, neuroscience, behavioral economics - anything that might yield useful clues to improving the art and craft of teaching. Her primary research question is, “How might we re-enchant learning in order to help faculty and students flourish?” Her new collaborative book *Learning that matters: A field guide to course design for transformative education*, is the basis for Tufts’ Course Design Institute. Cynthia and her husband, Charlie, live on a farm called “Shangri-Baa” where they raise a critically endangered breed of sheep and livestock guardian dogs.




Student Panel (Video)

- Tvisha Gupta, Freshman, Potential Major - Economics
- Mehek Vora, Freshman, Potential Majors - Psychology & CSHD
- Jazmyne Garrett: Sophomore, Major - Education and CSHD
- Richard Geoghegan: Sophomore, Major - Computer Science
- Muri Mascarenhas: Junior, Major - Human Development, Education & Visual Arts Minor
- Caddy Cicogna: 1st year at GSAS - MA Candidate in Educational Studies
- Ana Maafs-Rodríguez: 4th year at Friedman - PhD Candidate in the Nutrition Interventions, Communication and Behavior Change program

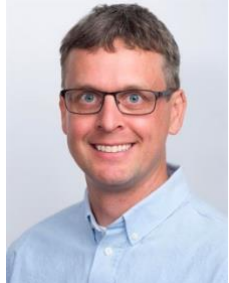
[Tufts University December 2023 Teaching Symposium](#)
[The Impact of Artificial Intelligence on Education at Tufts](#)

Faculty Panel

Moderated by Freedom Baird & Justin Horvath, ETS

		
<p>Meera Gatlin, DVM, MPH, DACVPM Assistant Teaching Professor, Department of Infectious Disease and Global Health Clinical Assistant Professor, Public Health and Community Medicine</p>	<p>Rebecca Shakespeare Lecturer, Urban & Environmental Policy & Planning</p>	<p>Erica Kemmerling Assistant Teaching Professor, Mechanical Engineering</p>

Play Space Learning Lab with Dr Ethan Danahy, CEEO & CS

	<p>Ethan Danahy Research Associate Professor, Center for Engineering, Education and Outreach (CEEEO) Research Associate Professor, Computer Science</p>
---	---

Bring your laptop to this open classroom play space for hands-on exploration of AI. This session will begin with a fellow faculty member demonstrating some of the ways that he has experimented with AI in his teaching. Then each participant will be encouraged to create something themselves using generative artificial intelligence. For example:

- cut & paste prompts on your own
- re-imagine an assignment or activity using AI
- use AI to create a case study or student discussion
- plan a collaborative student-discussion about AI
- revise a syllabus policy for your course and more.

No experience necessary. Hands on support will be provided from ETS & CELT's Freedom Baird, Carie Cardamone, Justin Lauzon & Justin Horvath.